



exocad

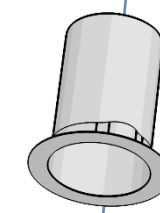
LASAK BioniQ QR Exocad library structure

Scanbody QR, indexed – narrow
Ref. No. 2876.00

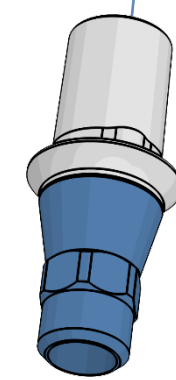


Dummy base shown
in the Exocad library

bioniq_qr_interface

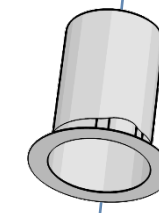


BioniQ QR Ti base
L0.8

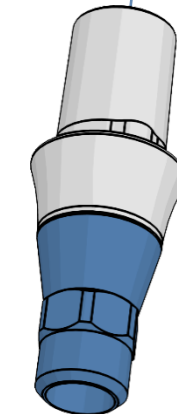


Ref. No.
2159.00

bioniq_qr_L2.0_interface

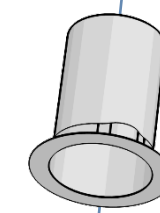


BioniQ QR Ti base
L2.0

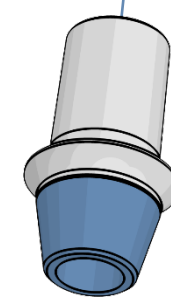


Ref. No.
2159.20

bioniq_qr_ni_interface

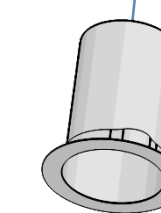


BioniQ QR/NI Ti base
L0.8

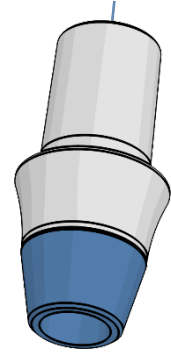


Ref. No.
2186.00

bioniq_qr_ni_L2.0_interface

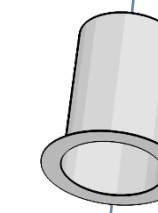


BioniQ QR/NI Ti base
L2.0

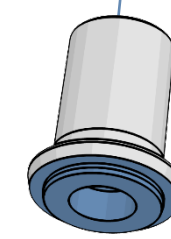


Ref. No.
2186.20

bioniq_qr_b_interface

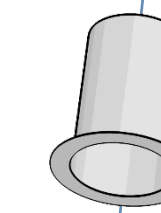


BioniQ QR/B Ti base
L0.4



Ref. No.
2158.00

bioniq_qr_b_L2.0_interface



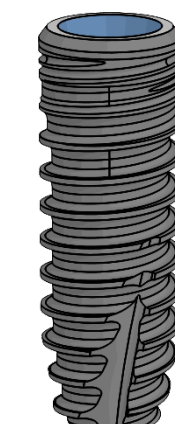
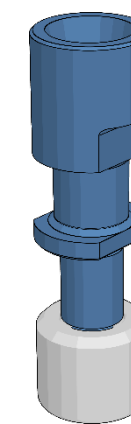
BioniQ QR/B Ti base
L2.0



Ref. No.
2158.20

The real base of the
BioniQ component

Ref. No.
2858.00



S3.5
S4.0
T4.0
S5.0
T5.0



exocad

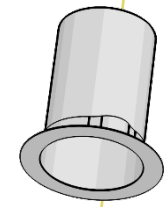
LASAK BioniQ QN Exocad library structure

Scanbody QN, indexed – narrow
Ref. No. 2877.00

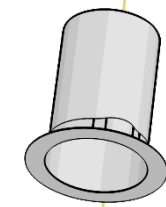


Dummy base shown
in the Exocad library

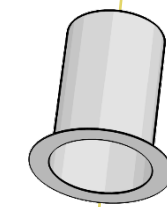
bioniq_qn_interface



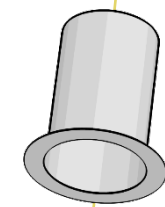
bioniq_qn_L2.0_interface



bioniq_qn_ni_interface



bioniq_qn_ni_L2.0_interface



FITS
to



FITS
to

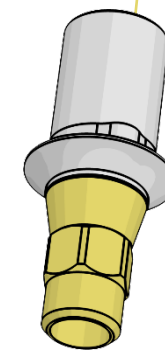


FITS
to



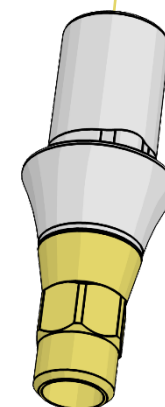
FITS
to

BioniQ QN Ti base
L0.8



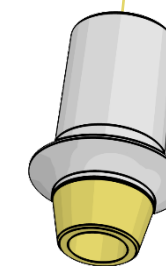
Ref. No.
2181.00

BioniQ QN Ti base
L2.0



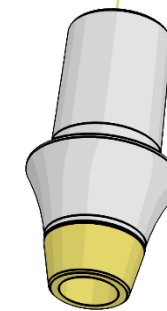
Ref. No.
2181.20

BioniQ QN/NI Ti base
L0.8



Ref. No.
2189.00

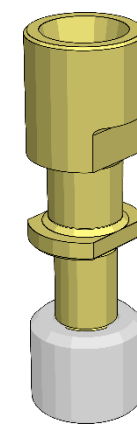
BioniQ QN/NI Ti base
L2.0



Ref. No.
2189.20

The real base of the
BioniQ component

Ref. No.
2859.00



S2.9

